

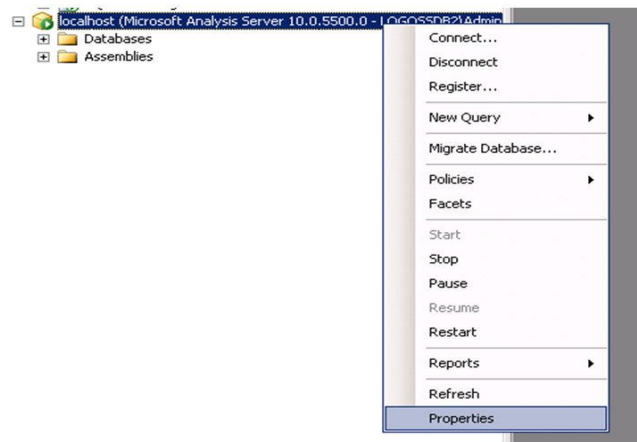
Like SQL, Microsoft SQL Server Analysis Services (SSAS) has memory limits that are often not set on servers. If you see **msmdsrv.exe** taking up a lot of memory after the Full Process runs at night, there is a chance the SQL Server Analysis Services caps need to be changed. **Note:** You must restart SQL Server Analysis Services if you change the allocated memory settings.

Instructions:

Open Microsoft SQL Server Management Studio. Navigate to **File > Connect > Object Explorer**, or in the connection pop-up, choose a *Server Type* of **Analysis Services**.



Right-click on the *Server name* and go to **Properties**.



The **Memory\LowMemoryLimit** and **Memory\HighMemoryLimit** settings control how much memory SQL Server Analysis Services can use on the server. When the values are less than 100, they represent a percentage of the available RAM on the SQL server. When these values are over 100, SQL server will interpret the values as **Bytes**, (i.e. 1024 = 1 kiloByte).

Memory \ HardMemoryLimit	U	U	U
Memory \ LowMemoryLimit	10	10	65
Memory \ TotalMemoryLimit	15	15	80
Network \ ListenOnlyOnLocalConne...	false	false	false



tyler
technologies

Capping Analysis Services Memory